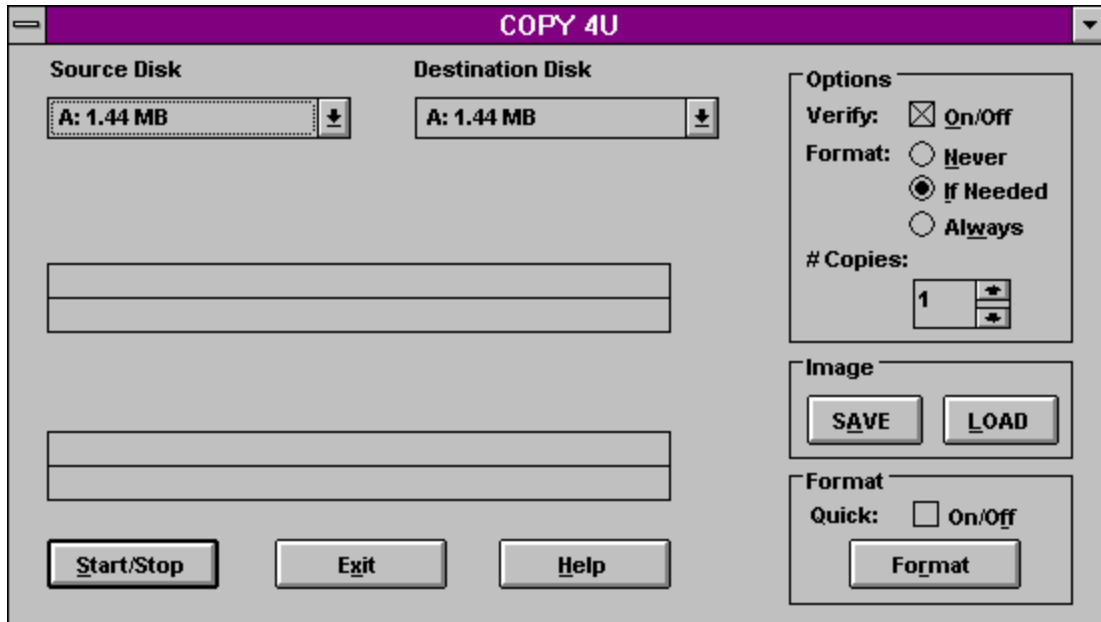


# COPY 4U V2.31

*ONE PASS, MULTITASKING COPY & FORMAT PROGRAM FOR WINDOWS 3.1*



COPY Features

FORMAT Features

COPY

IMAGE COPY

FORMAT

EXIT, SILENT, ABOUT

(C) 1992,1993 SOFTWARE APPLICATIONS

## **C O P Y Features**

### **One pass copy**

Copy a disk in only one pass (there must be enough memory available (RAM or Hard Disk space)).

### **Different formats**

Copy a disk to a different format.

e.g. 360KB --> 1.2MB, 360KB --> 1.44MB

You can also copy a disk with a higher format to a disk with lower format under the following condition :

The data on the source disk are smaller or equal then the available free space on the destination disk.

e.g. 1.44MB --> 720KB

### **Multitasking**

Copy can be done in background.

### **Multiple copies**

Make multiple copies from a single disk.

### **Image copy**

Store a complete diskimage on your hard disk.

Load a diskimage to your floppy disk.

### **Options**

Verify and Format Options can be choosen.

## **F O R M A T** Features

**Supports 360KB, 720KB, 1.2MB, 1.44MB**

### **Multitasking**

Format can be done in background.

### **Option - Quick**

Quickly formats a disk.

## COPY

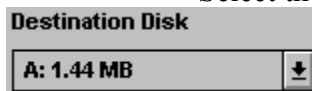
To copy a disk

1. Select your source and destination disk

Select the Source disk in the Source Disk Selection box



Select the Destination disk in the Destination Disk Selection box



2. Set your options



### Verify

ON Verifies the written data on the Destination Disk.  
OFF Doesn't verify the written data on the Destination Disk.

### Format

Never Never formats a disk.  
If the destination disk isn't formatted at writing a Error Messagebox will be displayed.

If Needed Formats a disk only if it is needed.

Always Always formats a disk.

### # Copies

Number of Copies - Set the Copycounter to the number of disk you want to write.  
The Copycounter will be decreased after each disk is copied.

### 3. Start the copy process

Press the Start button.

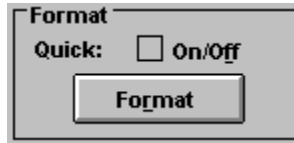


To stop a copy process press the Start/Stop button again.

## FORMAT

To format a disk :

1. Set your option



### Format - Quick

Quickly formats a disk.

Only the FAT (File Allocation Table) and the Bootsector will be formatted.

2. Select your disk

Select your disk in the Source Disk Selection Box  
(The Destination Disk will be ignored at formatting.)



3. Start the format process

Press the Format button.

## IMAGE COPY

Make/Store a disk image :

1. Select your source disk

Select the Source disk in the Source Disk Selection box



2. Start the image process



Press the Save Button

Now the image will be saved under a given name on your hard disk.

Load a disk image :

1. Select your source disk

Select the Source disk in the Source Disk Selection box



2. Start the image process



Press the Load Button

Now the selected image will be loaded to the source disk.

## Exit

Press the  button to exit from COPY4U.



## Silent

Activates or deactivates the Windows 3.1 Systemsounds.

## About

Displays a message box with some information about the program and the author.